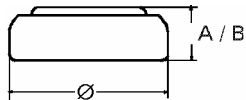


Data Sheet

Type Number 392
Designation IEC SR 41
System Silver oxide / Zinc /
 KOH - Electrolyte



Nominal Voltage 1,55 V
Typical Capacity C 38 mAh
 Load 13 kOhm, at 20°C down to 1.3 V

Weight (approx.) 0,69 g
Volume 0,16 ccm

Temperature Ranges

	min	max.
Storage	-10°C	65 °C
Discharge	-10°C	65°C

Dimensions

	min	max.
Diameter (A)	7,55	7,9
Height (B)	3,3	3,6

Segment Watch / High Drain

Main Applications Watch
 Photo
 Electronic

Typical Capacities (at 20°C)

Discharge Type	Load	End Voltage:	1.2 V
Continuous 24h/d,7d/w Current [µA]:	13000 Ω 120	Time: Capacity [mAh]: Energy [MWh]:	320 h 38 56