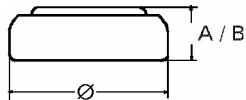


**Data Sheet**

**Type Number** ..... 384  
**Designation IEC** ..... SR 41  
**System** ..... Silver oxide / Zinc /  
 NaOH - Electrolyte



**Nominal Voltage** ..... 1,55 V  
**Typical Capacity C** ..... 38 mAh  
 Load 13 kOhm, at 20°C down to 1.2 V

**Weight (approx.)** ..... 0,69 g  
**Volume** ..... 0,16 ccm  
**Coding**..... Manufacturing Month/Year by  
 Letter Code

**Temperature Ranges** min max.  
 Storage ..... -10°C 65 °C  
 Discharge ..... -10°C 65°C

**Dimensions** min max.  
 Diameter ... ..... 7,55 7,9  
 Height (A/B) ..... 3,3 3,6

**Segment** ..... Photo

**Main Applications** ..... Watch  
 Photo  
 Electronic

**Typical Capacities (at 20°C)**

Discharge Type	Load	End Voltage:	1.2 V
Continuous	13000 Ω	Time:	320 h
24h/d,7d/w		Capacity [mAh]:	38
Current [μA]:	120	Energy [MWh]:	58

All Data contained herein is for single cells

For battery applications, performance data may vary from single cell data, depending on specific battery configuration

VARTA Microbattery GmbH, Daimlerstr. 1, D-73479 Ellwangen/Jagst  
 Tel.: (+49) 7961/921-0, Telefax: (+49) 7961/921-553

Subject to change without prior notice!  
 Date of issue: 07.08.2003