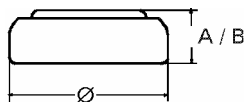


Data Sheet

Type Number 373
Designation IEC SR 68
System Silver oxide / Zinc /
 NaOH - Electrolyte



Nominal Voltage 1,55 V
Typical Capacity C 30 mAh
 Load 39 kOhm, at 20°C down to 1.3 V

Weight (approx.) 0,5 g
Volume 0,12 ccm
Coding..... Date of Manufacturing
 Month/Year

Temperature Ranges

	min	max.
Storage	-10°C	65°C
Discharge	-10°C	65°C

Dimensions

	min	max.
Diameter (Ø).....	9,4	9,5
Height (A/B)	1,5	1,6

Segment Watch

Main Applications Watch
 Photo
 Electronic

Typical Capacities (at 20°C)

Discharge Type	Load	End Voltage:	1.3 V
Continuous 24h/d,7d/w Current [µA]:	39000 Ω 40	Time:	746 h
		Capacity [mAh]:	30
		Energy [mWh]:	47