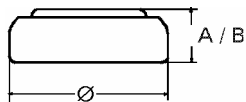


Data Sheet

Type Number 362
Designation IEC SR 58
System Silver oxide / Zinc /
 NaOH - Electrolyte



Nominal Voltage 1,55 V
Typical Capacity C 21 mAh
 Load 39 kOhm, at 20°C down to 1.3 V

Weight (approx.) 0,4 g
Volume 0,09 ccm
Coding..... Manufacturing Month/Year by
 Letter Code

Temperature Ranges min max.
 Storage -10°C 65 °C
 Discharge -10°C 65°C

Dimensions min max.
 Diameter ... 7,55 7,9
 Height (A/B) 1,85 2,1

Segment Watch

Main Applications Watch
 Photo
 Electronic

Typical Capacities (at 20°C)

Discharge Type	Load	End Voltage:	1.3 V
Continuous	39000 Ω	Time:	525 h
24h/d,7d/w		Capacity [mAh]:	21
Current [μA]:	40	Energy [MWh]:	33