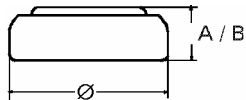


**Data Sheet**

**Type Number** ..... 329  
**Designation IEC** ..... ---  
**System** ..... Silver oxide / Zinc /  
 NaOH - Electrolyte



**Nominal Voltage** ..... 1,55 V  
**Typical Capacity C** ..... 36 mAh  
 Load 20 kOhm, at 20°C down to 1.3 V

**Weight (approx.)** ..... 0,6 g  
**Volume** ..... 0,15 ccm  
**Coding**..... Manufacturing Month/Year by  
 Letter Code

**Temperature Ranges** min max.  
 Storage ..... -10°C 65 °C  
 Discharge ..... -10°C 65°C

**Dimensions** min max.  
 Diameter ... ..... 7,7 7,9  
 Height (A/B) ..... 2,8 3,1

**Segment** ..... Watch

**Main Applications** ..... Watch  
 Photo  
 Electronic

**Typical Capacities (at 20°C)**

Discharge Type	Load	End Voltage:	1.3 V
Continuous	20000 Ω	Time:	460 h
24h/d,7d/w		Capacity [mAh]:	36
Current [μA]:	78	Energy [MWh]:	56