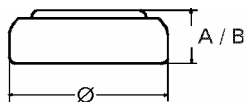


Data Sheet

Type Number 315
Designation IEC SR 67
System Silver oxide / Zinc /
 NaOH - Electrolyte



Nominal Voltage 1,55 V
Typical Capacity C 21,5 mAh
 Load 39 kOhm, at 20°C down to 1.3 V

Weight (approx.) 0,4 g
Volume 0,09 ccm
Coding..... Date of Manufacturing
 Month/Year

Temperature Ranges min max.
 Storage -10°C 65°C
 Discharge -10°C 65°C

Dimensions min max.
 Diameter (Ø)..... 7,65 7,90
 Height (A/B) 1,45 1,65

Segment Watch

Main Applications Watch
 Photo
 Electronic

Typical Capacities (at 20°C)

Discharge Type	Load	End Voltage:	1.3 V
Continuous 24h/d,7d/w Current [µA]:	39000 Ω	Time:	538 h
		Capacity [mAh]:	21,5
	40	Energy [mWh]:	33,5